

# UBSTATION 220 KV "PORT"

Creating a modern energy infrastructure for the development of the Taman Peninsula – is the most significant project for the company.

CLOSED  
TYPE SUBSTATION

2017 Start of work



Voltage 220 kV



Power 432 MVA



The volume of investments is 7 billion rubles.



Fully protected from wind and corrosion



Noise-free



Safe for the environment



FIRSTHAND EXPERIENCE

FOR US THIS IS A POWER FACILITY OF SPECIAL IMPORTANCE. FOR THE FIRST TIME IN MODERN HISTORY, KUBANENERGO IS BUILDING A SUBSTATION OF THIS VOLTAGE TYPE. THIS IS A MODERN HIGH-TECH CLOSED-TYPE SUBSTATION WITH A HIGH DEGREE OF RELIABILITY, DESIGNED FOR A LONG SERVICE LIFE, PROTECTED FROM ICING AND WIND LOADS.

**GAVRILOV**  
ALEXANDER ILYICH

GENERAL DIRECTOR OF KUBANENERGO PJSC

PJSC KUBANENERGO



Power lines 35-110-220 kV



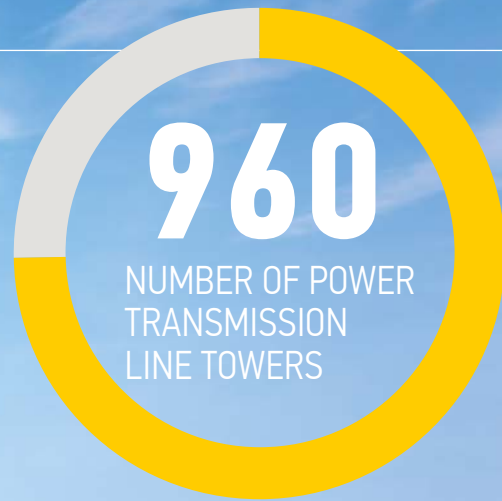
The total length of 186 km



Increased throughput



Protected from sticking of snow and ice



- 1) Deadline for construction – December 2018
- 2) Commissioning – March 2019



Multi-sided supports



High strength galvanized steel



Height ~ 40 m



Firm foundation



Protected against corrosion



Service life  $\geq$  50 years

The 220 kV substation will become the basis for the development of industry and infrastructure of the Taman Peninsula, it will meet the needs of the transport and railway crossings of the Crimean Bridge.

**EQUIPMENT**

Cubicle switchboards (metal-clad installations) 220/110 kV with hexafluorated sulfur (SF<sub>6</sub>) gas insulation

Static capacitor batteries

Arc suppression reactors

Current-limiting reactors

T-1 and T-2 power transformers 16 MVA

Power transformers AT-1 and AT-2 220/100 200 MVA

Regulating transformers